

## About WWC Engineering

WWC Engineering is a mid-size, multi-disciplinary engineering firm that has been serving the Rocky Mountain region since 1980. WWC's range of consulting services is broad and WWC employs an exceptional staff that has worked on a multitude of projects, giving them experience from Planning to Design through Construction. WWC Engineering strives to give Municipalities the best available services possible and has extensive experience working with State and Federal Agencies, thus giving Municipalities a connection to much needed funding for projects within their community.



## Municipal Services

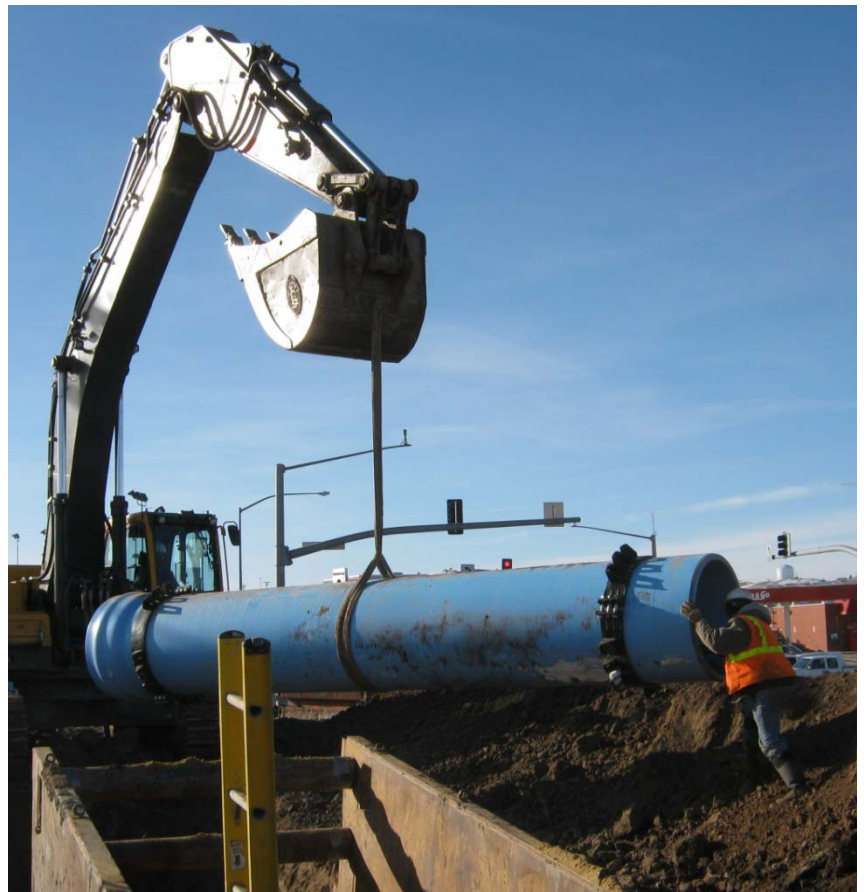
WWC Engineering provides a wide array of Municipal services throughout the state of Montana and Wyoming. Some of these services include the following:

- Transportation Engineering
- Bicycle and Pedestrian Pathways
- Water and Wastewater Systems
- Surveying
- Storm Water Management
- Groundwater Hydrology
- Public Involvement
- Floodplain Assessments
- Preliminary Engineering Reports
- Culvert & Bridge Replacements
- Environmental Services
- Solid Waste Management
- CADD & GIS Services
- Grant Writing/Administration
- Planning Services
  - Subdivision & Zoning Review
  - Growth Policies
  - Subdivision Regulations
  - Zoning Regulations
  - Capital Improvement Plans
  - Floodplain Administration



## WWC's Approach

WWC's staff has always maintained an open communication approach with all clients and understands the importance of providing quality services that are innovative and keep within budget constraints. WWC approaches all projects with an open mind and is aware that each Municipality strives to maintain its community character. WWC has been very successful in assisting Municipalities with obtaining funding for projects and strives to make projects affordable without compromising the quality of the project and/or service.



WWC Engineering  
1275 Maple Street Suite F  
Helena, MT 59601  
(406) 443-3962

See more of our work at [www.WWCEngineering.com](http://www.WWCEngineering.com)